

OTN Implants

BADAL[®]

Bone Anchoring Device for Artificial Limbs

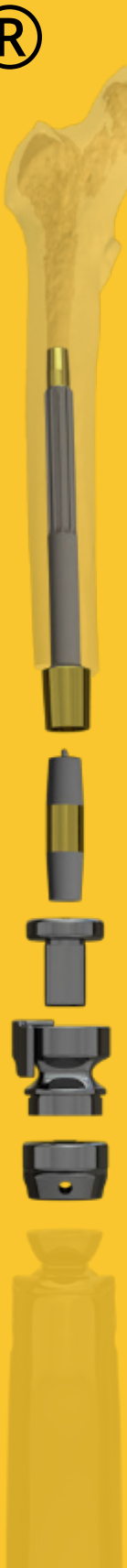


OTN Implants

BADAL[®]



*Carefree life
without
socket*

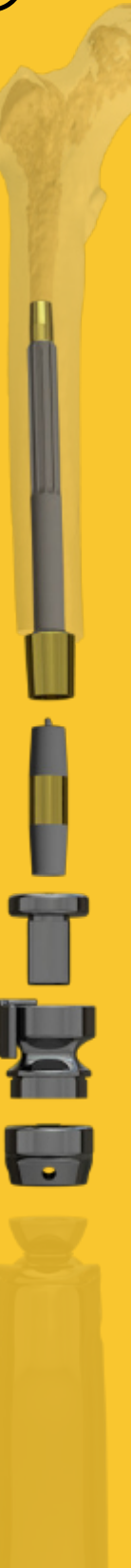


OTN Implants

BADAL[®]



Better sit comfort



OTN Implants

BADAL[®]



*More control
and stability*



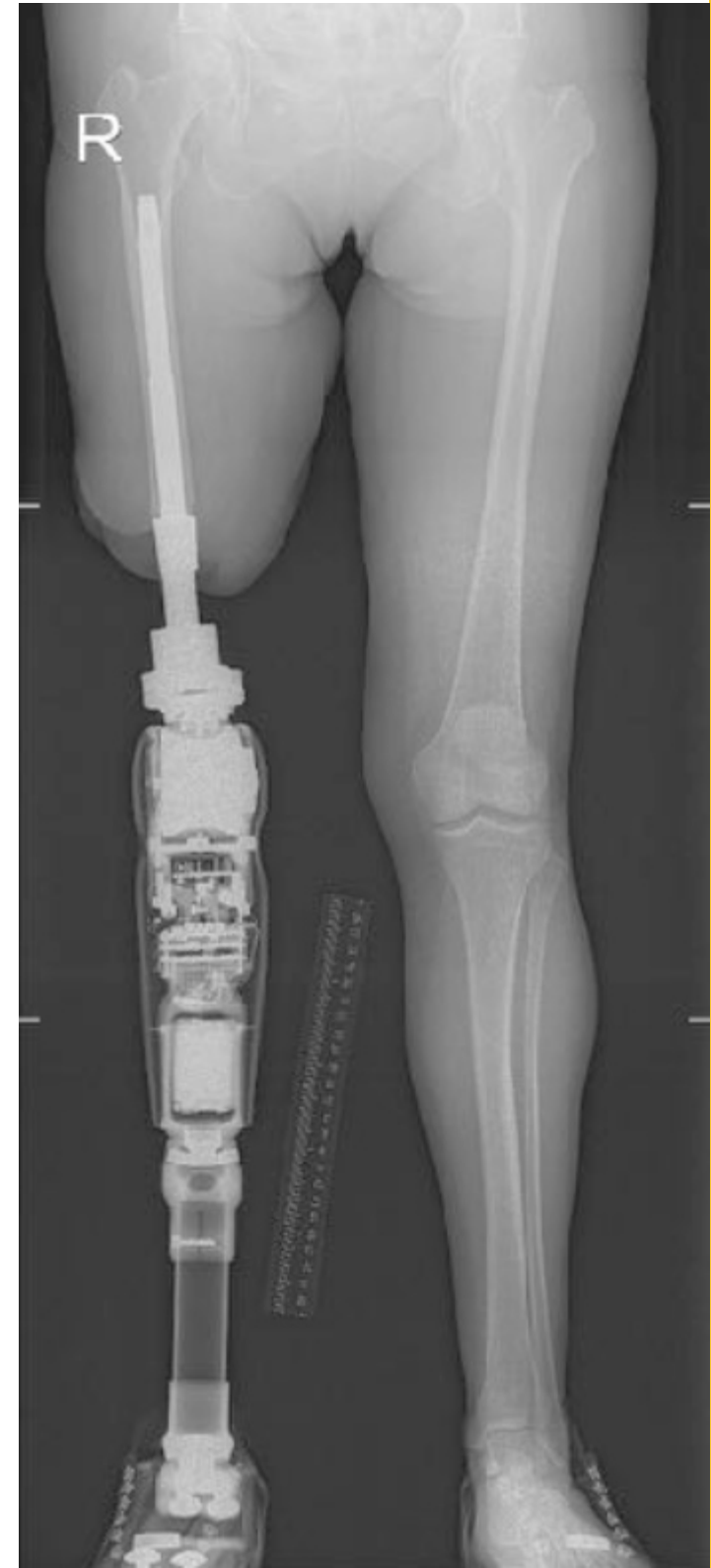
OTN Implan

BADAL[®]

products

OFI-C (Curved)

for standard femur



®

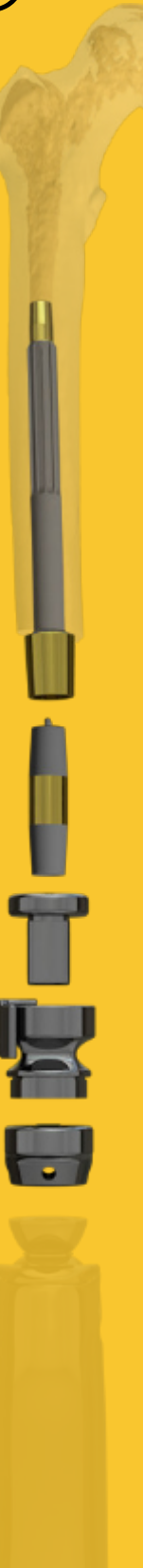


OTN Implants

BADAL[®]

products

OFI-Y (Gamma)
for short femur



OTN Implants

BADAL[®]

products

OTI
for tibia



OTN Implants

BADAL[®]

products

Dual Cone Adapter



OTN Implants

BADAL[®]

products

LUCI Connector

(with Offset Plate size 0)



OTN Implants

BADAL[®]

products

HELI Connector

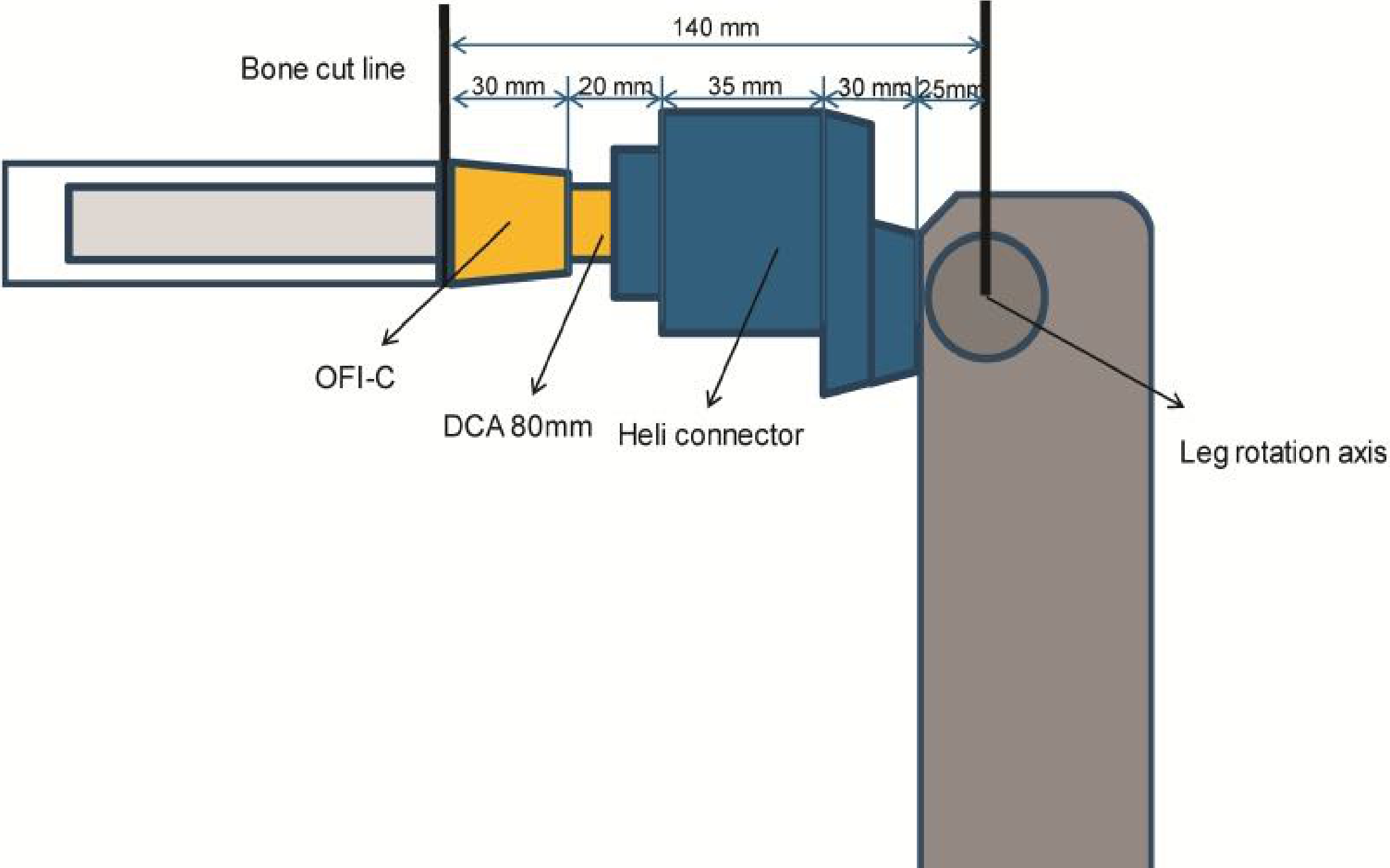
(with Offset Plate size 60)



OTN Implants

BADAL[®]

product specifications



OTN Implants

BADAL[®]×

Bone Anchoring Device for Artificial Limbs



criteria

Inclusion criteria

- Lower limb amputation (above and below knee amputation)
- Problems with socket attachment of artificial limb (volume fluctuation, skin breakdown, excessive perspiration, loosening, instability, pain)

Exclusion criteria

- Bone deformities
- Bone healing disease
- Radiotherapy residual limb
- Severe diabetes
- Severe peripheral vascular disease
- Local or systemic inflammatory disease
- Immunocompromised
- Severe cognitive impairments
- Pregnancy

1 year follow up, n=91

Safety

- Septic loosening: 1%
- Stoma infection grade 1: 11%
- Stoma infection grade 2: 10%



Stoma infection grade 1: 11%

Effectiveness

- Improvement in prosthetic use: 73%
- Improvement in quality of life (QTFA Global Score): 79%



OTN Implants

treatment procedure

BADAL[®]

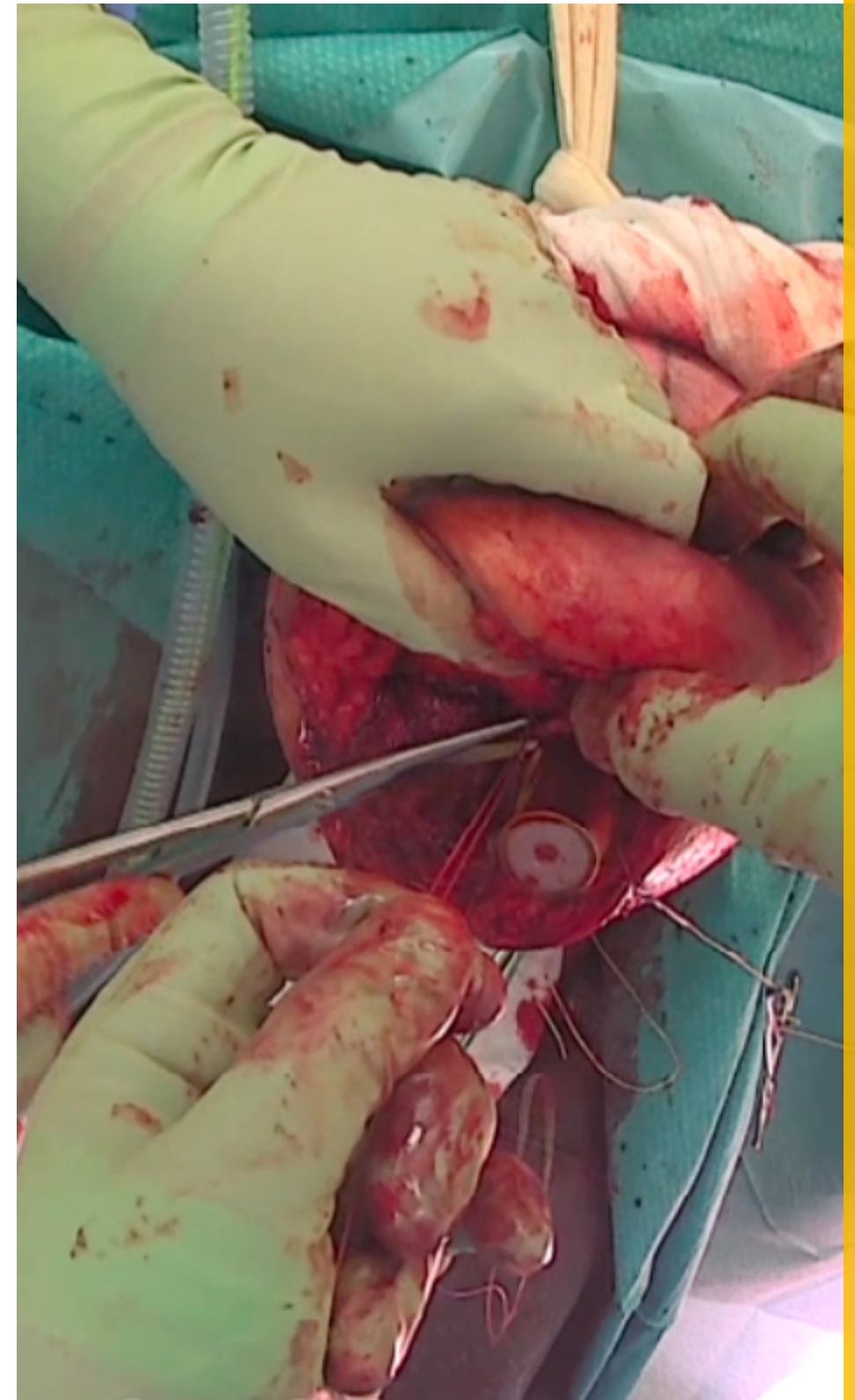
Two (or single) stage surgery

Stage 1

- Press-fit application of implant
- 1 day hospital stay

Stage 2

- 4-6 weeks after stage 1
- Creation of stoma and application of adapter
- Installation of connector
- Prosthetic alignment



OTN Implants

BADAL[®]

treatment procedure



OTN Implants

rehabilitation

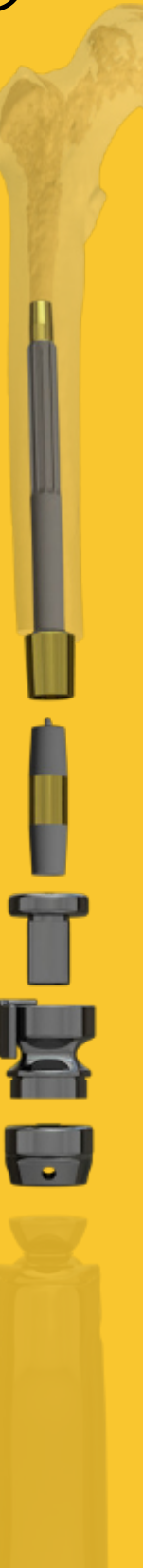
- Duration: 4-12 weeks
- Setting: Outpatient clinic

BADAL[®]



advantages

- Better prosthetic control and stability (safety)
- Osseoperception
- Perfect sitting comfort
- No unexpected loosening
- Easy and quick donning and doffing
- No perspiration problems
- Muscle growth in residual limb
- Bone growth in residual limb



OTN Implants

BADAL[®]

advantages

Effect of BADAL X on bone in residual limb

One day after
implantation

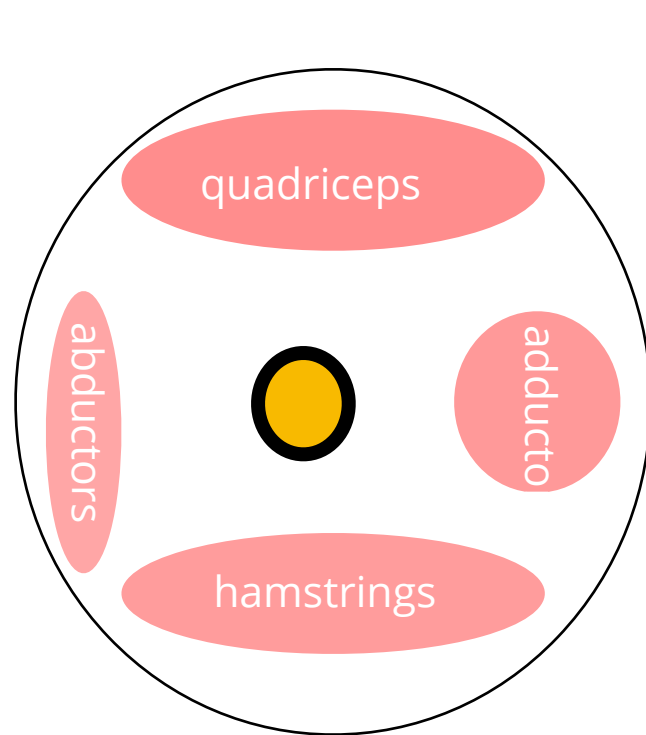
12 months after
implantation

source: Haket LM, et al. JOR 2016

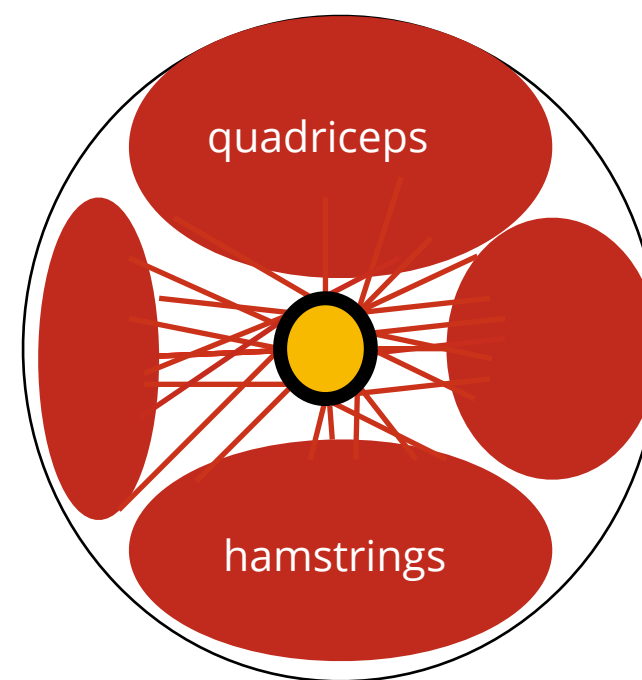
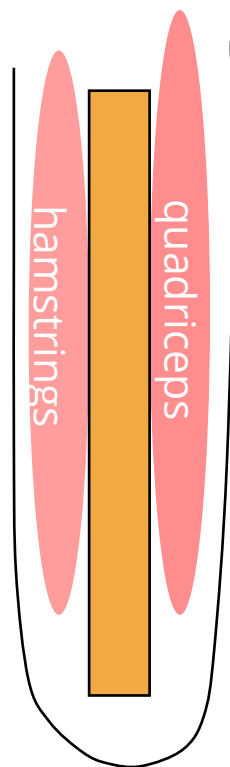


advantages

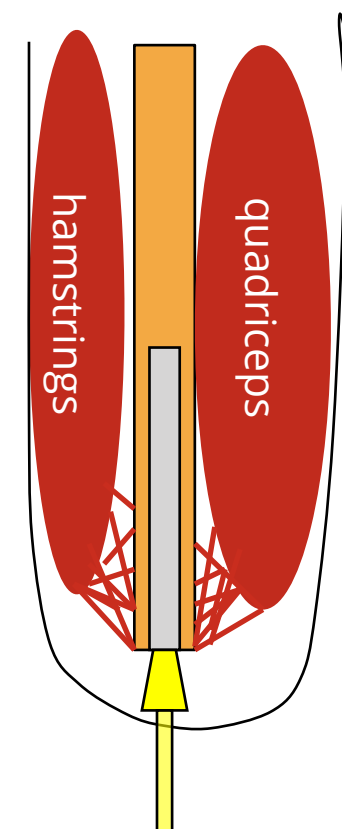
Effect of BADAL X on muscles in residual limb



**Before BADAL
X**



After BADAL X



OTN Implants

BADAL[®]

stoma



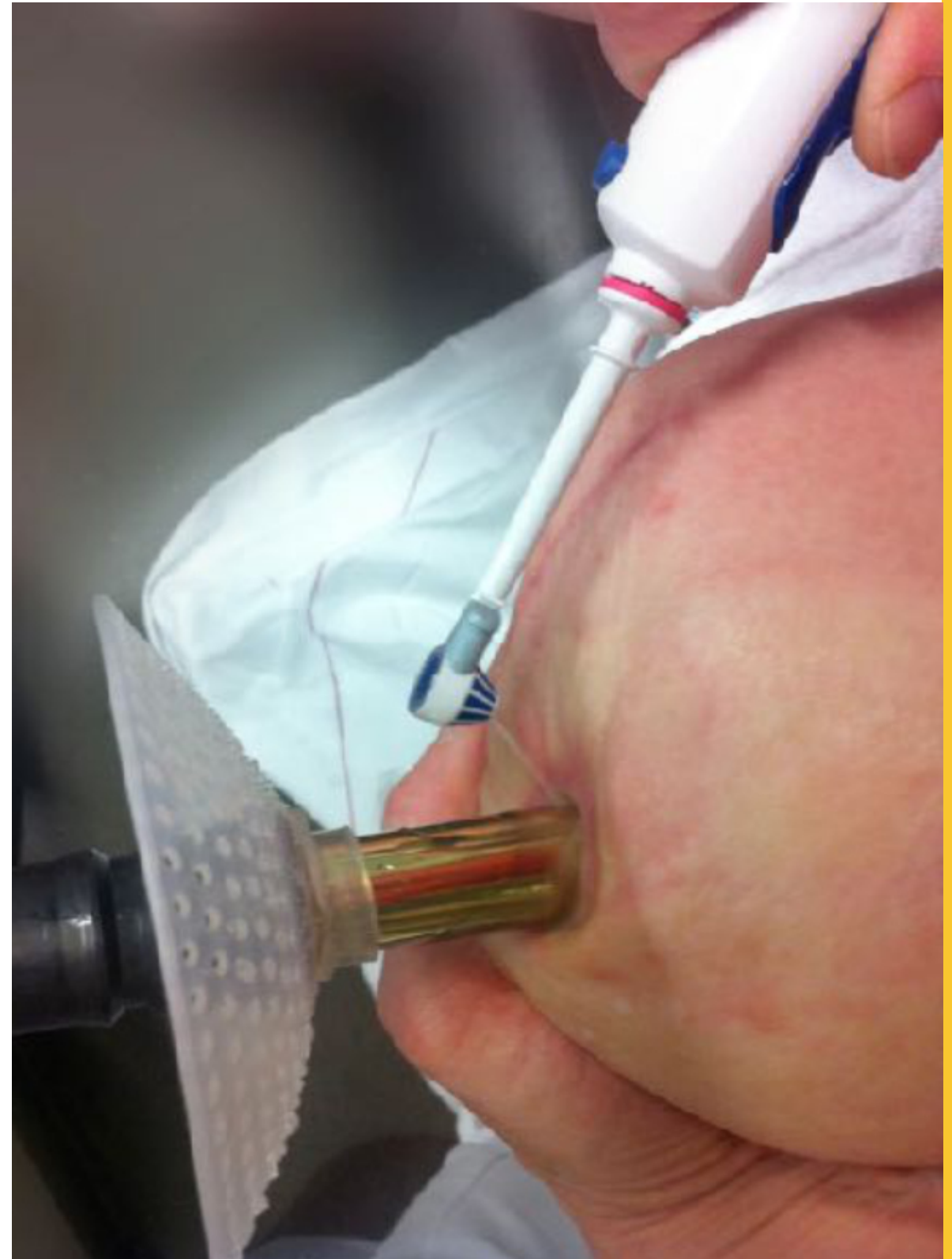
OTN Implants

stoma care

- Twice daily
- With shower or oxyjet



BADALX[®]



OTN Implants

BADAL[®]

Bone Anchoring
Device for Artificial
Limbs



OTN Implants

BADAL[®]

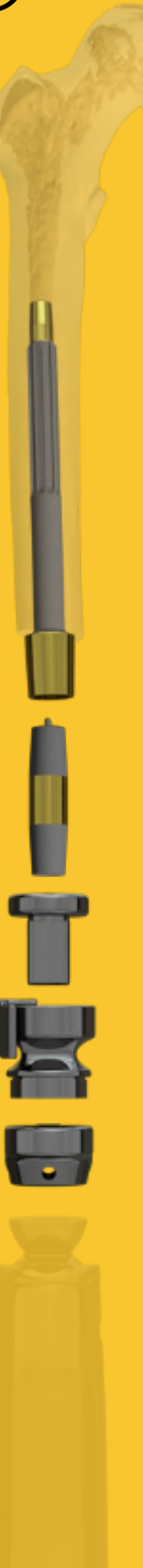
cosmetics



OTN Implants

BADAL[®]

do's



OTN Implants

BADAL[®]

don't's



OTN Implants

BADAL[®]

more information

www.otnimplants.nl

mail@otnimplants.nl

